



# Taralay Initial

Compact and acoustic solutions,  
for high traffic applications

**Gerflor**<sup>®</sup>

# Taralay Initial

## Eco responsible Solution Umweltbewusste Lösungen



**100 % recyclable**  
100 % recycelbar



### Health & Wellness

Anti-viral and anti-bacterial activity  
Comfort : reduction by 19 dB (Comfort)  
Indoor air quality: TVOC emissions  
10 times better than norms requirements

### Gesundheit und Wohlbefinden

Antivirale und antibakterielle Aktivität  
Beste Raumluftqualität: TVOC-Emissionen  
10-mal niedriger als die Normvorgaben  
Hervorragende Trittschalldämmung  
(19 dB Komfort)



**Made in France**

## we care / we act

Our Commitments for a Sustainable future

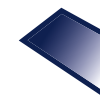
## Design & Performance



**Ultra realistic wood designs**  
Ultrarealistische Holzdessins



**Beautiful floors thanks to metallic inks**  
Besondere Tiefenwirkung durch Metallic-Effekte



**Mat Effect**  
für ein natürliches und hochwertiges Erscheinungsbild  
Matteffekt



**Performance indentation/ acoustic**  
Acoustic 0.10 mm/19 dB  
Kompakt 0.03 mm/6 dB  
Besonders gutes Verhältnis von Resteindruck zu Trittschalldämmung  
Acoustic 0.10 mm / 19 dB  
Kompakt 0.03 mm / 6 dB

**Protecsol®**

### Easy and economical maintenance solution

no wax required

Einpflegefrei und besonders leicht zu reinigen

reduziert erheblich den Einsatz von Wasser und Reinigungsmitteln

# More than floors... global finishes solutions

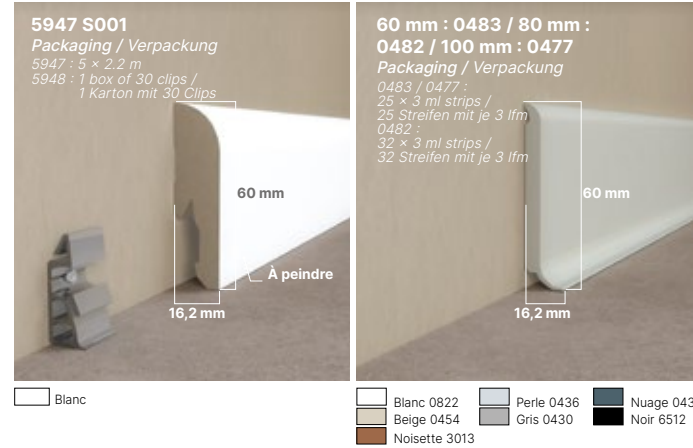
Mehr als nur ein bodenbelag:

More information on [gerflor.com](http://gerflor.com)

Für weitere Informationen besuchen Sie: [gerflor.de](http://gerflor.de)



## Design skirting (mdf) / Semi-rigid skirting Vynaflex MDR dekor-sockelleiste/ Vinyl dekor-sockelleiste



## Welding rods Schweißschnüre

Welding rods table on [gerflor.com](http://gerflor.com)  
Schweißschnürübersicht unter: [gerflor.de](http://gerflor.de)



## PVC cove former Holkehl-profile



## Entrance mats Saubelauf

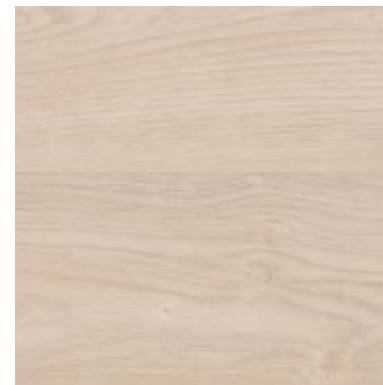


			TARALAY INITIAL ACOUSTIC	TARALAY INITIAL COMPACT
Bostonian	0959	Brown	●	●
	0960	Grey	●	●
	0961	Honey	●	●
Diversión	0049	Carbone	●	●
	0047	Ivoire	●	●
	0515	Kiwi	●	●
	0962	Marine	●	●
	0949	Soleil	●	●
	0824	Souris	●	●
	0825	Turquoise	●	●
Esterel	0636	Blond	●	●
Filament	0826	Grey	●	●
	0799	Light	●	●
Habana	0828	Beige	●	●
	0797	Ivory	●	●
Miami	0966	Abricot	●	●
	0968	Ciel	●	●
	0965	Foret	●	●
	0951	Litchee	●	●
	0967	Mer	●	●
	0969	Paon	●	●
	0963	Perle	●	●
	0950	Sable	●	●
	0952	Soleil	●	●
	0964	Souris	●	●
Noma	0970	Taupe	●	●
	0588	Clair	●	●
	0698	Naturel	●	●
Ranch	0773	Ranch	●	●
Renzo	0953	Anthracite	●	●
	0590	Steel	●	●
Spider	0973	Alu	●	●
	0957	Cuivre	●	●
	0954	Dore	●	●
	0975	Emeraude	●	●
	0956	Grenat	●	●
	0955	Perle	●	●
	0976	Quartz	●	●
	0974	Saphir	●	●
Strada	0790	Chrome	●	●
	0465	Ciment	●	●
Twist	0791	Metallic	●	●
	0978	Blond	●	●
	0980	Brown	●	●
Urban	0977	Grey	●	●
	0979	White	●	●
	0958	Beige	●	●
0035	Gris	●	●	
	0037	Souris	●	●

# Taralay Initial



0979 - Twist White  
NCS: 2002-R / LRV: 60



0797 - Habana Ivory  
NCS: 2005-Y50R / LRV: 52,7

INTERIOR  
DESIGNER



interiordesigner.gerflor.com

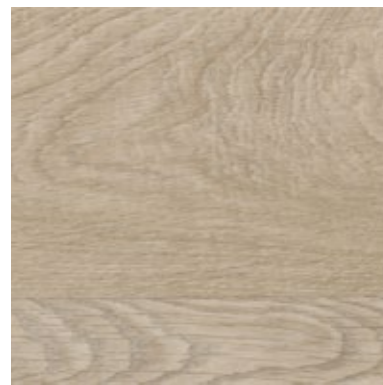
SAMPLE /  
MUSTER



0773 - Ranch  
NCS: 5005-Y20R / LRV: 23,5



0588 - Noma Clair  
NCS: 3005-Y50R / LRV: 36,5



0828 - Habana Beige  
NCS: 4010-Y30R / LRV: 35,8



No plank  
Continuous  
design/  
Keine  
Planken -  
fortlaufendes  
Design

0799 - Filament Light  
NCS: 4005-Y20R / LRV: 31,7



All colours  
available as  
**ACOUSTIC/  
COMPACT** /  
Alle Farben  
sind als  
**COMPACT und  
ACOUSTIC**  
verfügbar

Sheet with  
foam backing  
**(ACOUSTIC)** /  
Akustikversion  
mit  
Schaumrücken  
**(ACOUSTIC)**

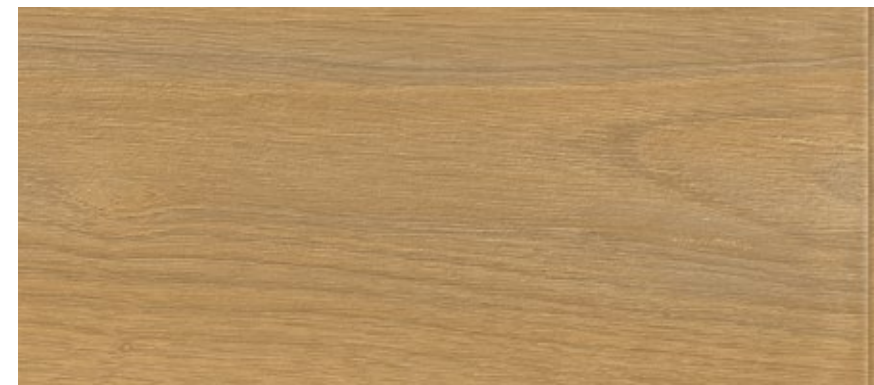


19 dB - 2 m

Sheet  
without foam  
backing  
**(COMPACT)** /  
Kompaktversion  
mit  
Kompaktrücken  
**(COMPACT)**



6 dB - 2 m



0961 - Bostonian Honey  
NCS: 4020-Y30R / LRV: 27,6



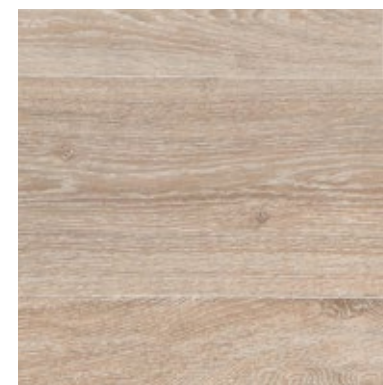
0978 - Twist Blond  
NCS: 2010-Y40R / LRV: 46,1



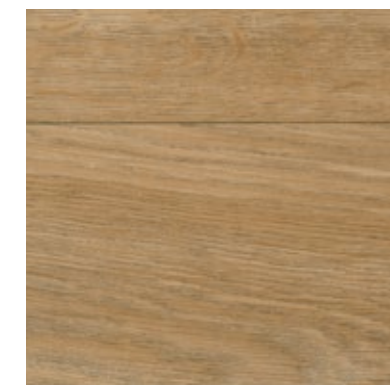
0960 - Bostonian Grey  
NCS: 6005-Y80R / LRV: 14,4



0977 - Twist Grey  
NCS: 6005-Y50R / LRV: 19,5



0698 - Noma Naturel  
NCS: 4005-Y20R / LRV: 36,2



0636 - Estere! Blond  
NCS: 5030-Y40R / LRV: 25,6



No plank  
Continuous  
design/  
Keine  
Planken -  
fortlaufendes  
Design

0590 - Renzo Steel  
NCS: 6500-N / LRV: 14,5



0953 - Ranch Anthracite  
NCS: 6005-Y80R / LRV: 16,4



0980 - Twist Brown  
NCS: 5010-Y30R / LRV: 18

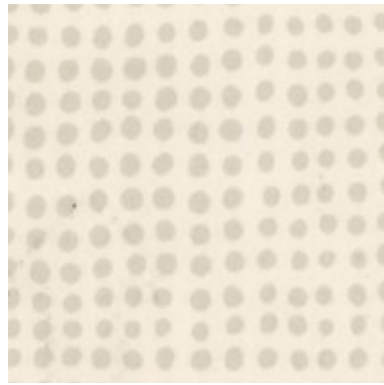


0959 - Bostonian Brown  
NCS: 6010-Y50R / LRV: 14,7

To validate your choice, order a 16 x 24 cm sample: [www.gerflor.com](http://www.gerflor.com)

Um Ihre Wahl zu bestätigen, bestellen Sie bitte ein Muster im Format 16 x 24 cm : [www.gerflor.de](http://www.gerflor.de)

# Taralay Initial



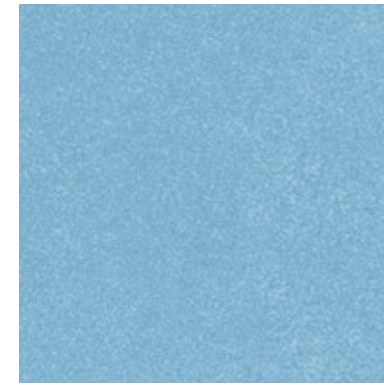
0047 - Divercion Ivoire  
NCS: 1502-Y / LRV: 60,7



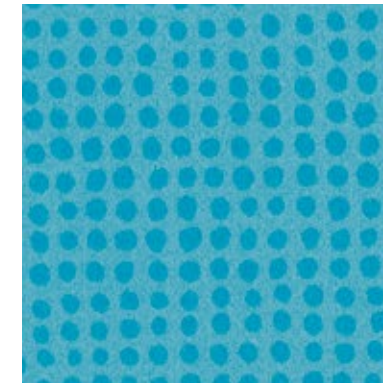
0958 - Urban Beige  
NCS: 4010-Y50R / LRV: 34



0954 - Spider Dore  
NCS: 3010-Y40R / LRV: 39,6



0968 - Miami Ciel  
NCS: 2030-R90B / LRV: 37,7



0825 - Divercion Turquoise  
NCS: 2050-B20G / LRV: 30,5



0974 - Spider Saphir  
NCS: 3040-B / LRV: 22,8



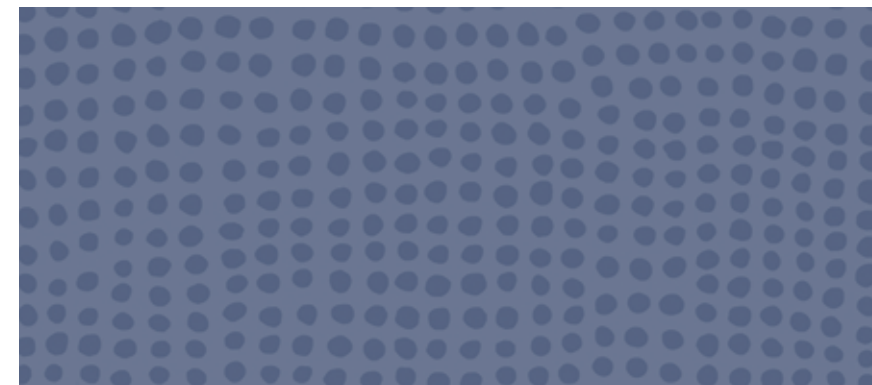
0950 - Miami Sable  
NCS: 3020-Y50R / LRV: 38,3



0952 - Miami Soleil  
NCS: 2020-Y30R / LRV: 35,8



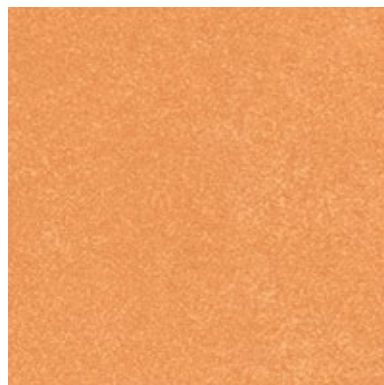
0949 - Divercion Soleil  
NCS: 2050-Y20R / LRV: 40,8



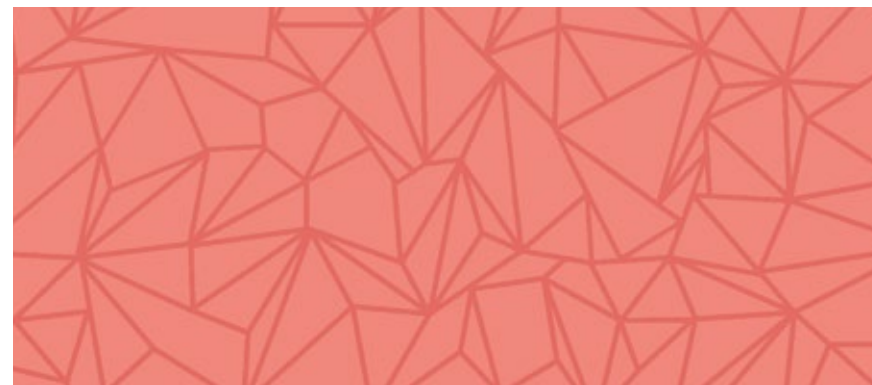
0962 - Divercion Marine  
NCS: 4030-R70B / LRV: 16,2



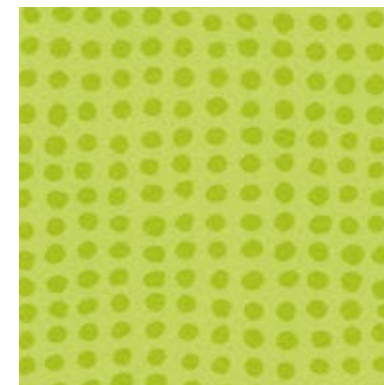
0967 - Miami Mer  
NCS: 4030-B / LRV: 19,7



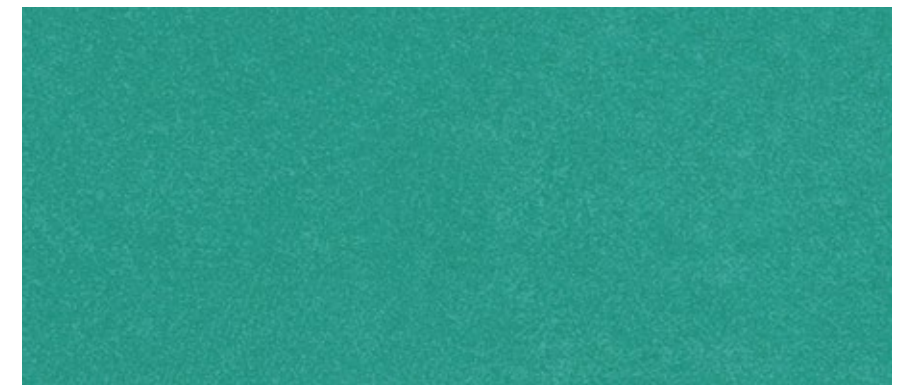
0966 - Miami Abricot  
NCS: 2040-Y50R / LRV: 35,1



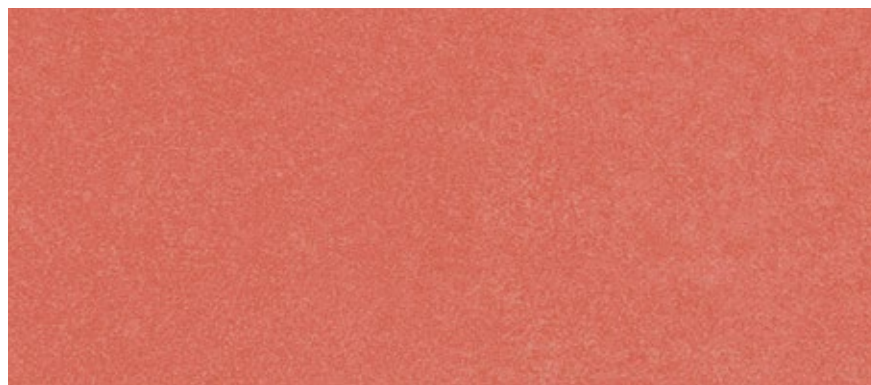
0976 - Spider Quartz  
NCS: 2040-Y90R / LRV: 29,4



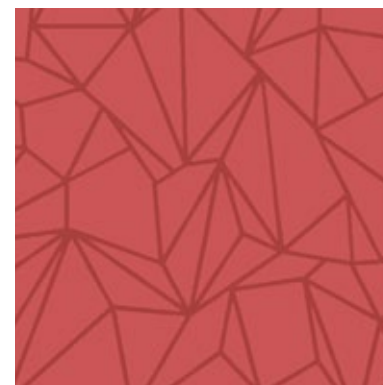
0515 - Divercion Kiwi  
NCS: 2050-G70Y / LRV: 45



0965 - Miami Foret  
NCS: 3040-B80G / LRV: 24,5



0951 - Miami Litchee  
NCS: 3050-Y90R / LRV: 18,9



0956 - Spider Grenat  
NCS: 3050-R / LRV: 15,9



0975 - Spider Emeraude  
NCS: 6020-B70G / LRV: 11,9

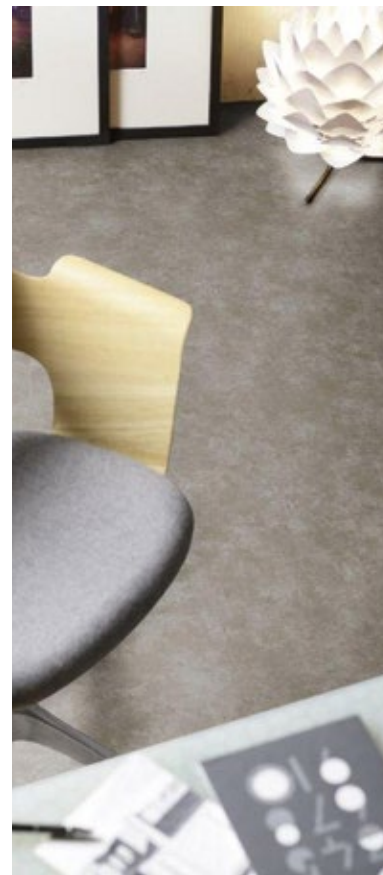


0969 - Miami Paon  
NCS: 5040-B20G / LRV: 10,8

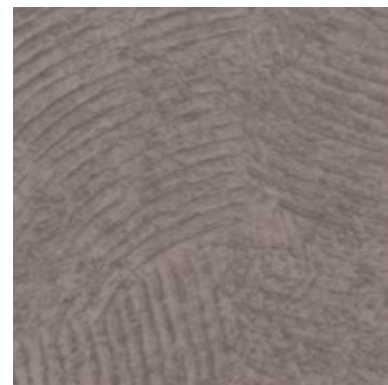
# Taralay Initial



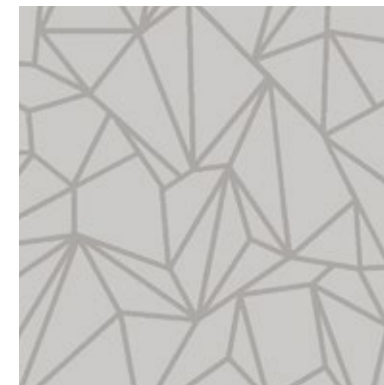
0037 - Urban Souris  
NCS: 3502-R / LRV: 34,8



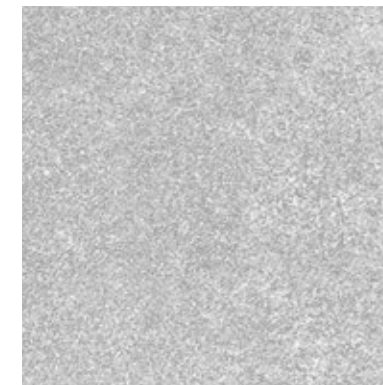
0790 - Strada Chrome  
NCS: 3500-N / LRV: 21,4



0035 - Urban Gris  
NCS: 5502-R / LRV: 24,1



0955 - Spider Perle  
NCS: 3005-R50B / LRV: 38,7



0963 - Miami Perle  
NCS: 3005-R20B / LRV: 43

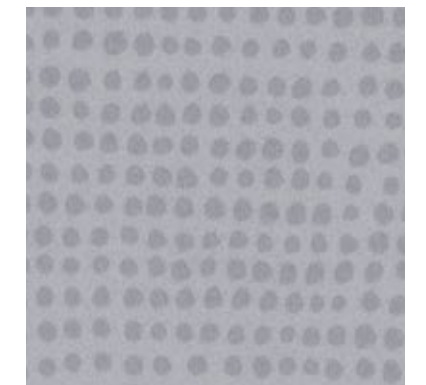


0826 - Filament Grey  
NCS: 3500-N / LRV: 39,4

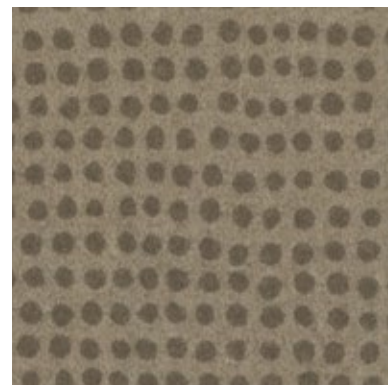


0465 - Strada Ciment  
NCS: 4502-R / LRV: 25,7

**Compact  
Version** 



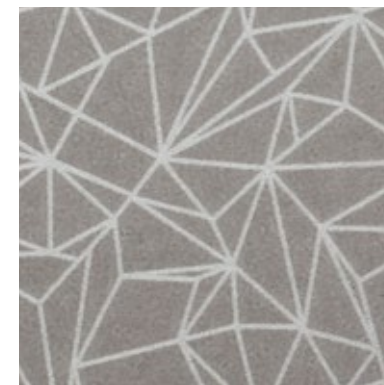
0824 - Diversion Souris  
NCS: 3502-B / LRV: 36,7



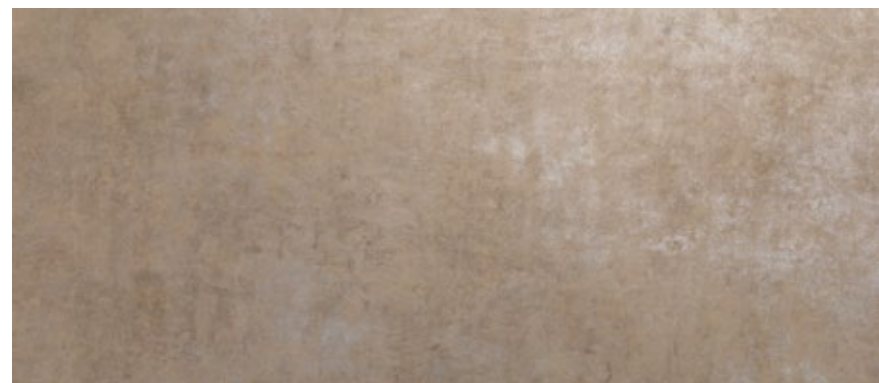
0049 - Diversion Carbone  
NCS: 6005-Y50R / LRV: 13,7



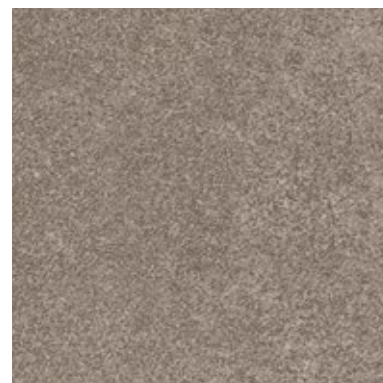
0957 - Spider Cuivre  
NCS: 4005-Y50R / LRV: 35,1



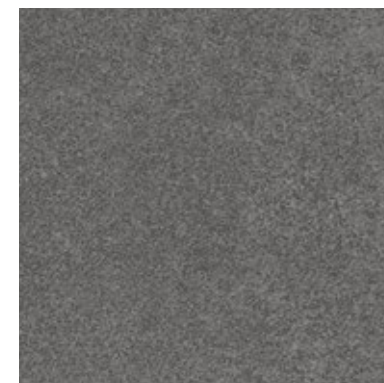
0973 - Spider Alu  
NCS: 5502-R / LRV: 21,5



0791 - Strada Metallic  
NCS: 5005-Y20R / LRV: 22,3



0970 - Miami Taupe  
NCS: 5005-Y50R / LRV: 20,7



0964 - Miami Souris  
NCS: 4502-R / LRV: 24,9




			Taralay Initial Compact	Taralay Initial Acoustic
<b>Description / Beschreibung</b>				
Total Thickness / Gesamtdicke	EN ISO 24346	mm	2.00	3.35
Thickness of the wearlayer / Dicke der Nutzschrift	EN ISO 24340	mm	0.70	0.65
Weight / Flächengewicht	EN ISO 23997	g/m <sup>2</sup>	2635	2825
Width of sheet / Rollenbreite	EN ISO 24341	cm	200	200
Length of sheet / Rollenlänge	EN ISO 24341	ml	25	25
<b>Classification / Klassifikation</b>				
Norm/Product Specification / Produktnorm	-	-	EN ISO 10582	EN ISO 11638
European Classification / Europäische Klassifizierung	EN ISO 10874	Class	34-43	34-42
Impact sound insulation / Trittschallverbesserungsmaß	EN ISO 717-2	dB	6	19
Room Impact / Raumschall	NFS 31 074	dB	-	< 65
Fire Rating / Brandverhalten	EN 13501-1	Class	Bfl-s1	Bfl-s1
Static Electrical Propensity / Begehaufladung	EN 1815	kV	< 2	< 2
Slip Resistance Wet / Rutschhemmung	DIN 51 130	Class	R10	R10
<b>Performances / Technische Eigenschaften</b>				
Wear Resistance / Verschleißverhalten	EN 660.2	mm <sup>3</sup>	≤ 2.0	≤ 2.0
Wear Group / Verschleißgruppe	QB 30	group	T	T
Type Binder content / Bindemittelgehalt	EN ISO 10582	type	I	-
Dimensional stability (norm) / Maßstabilität (norm)	EN ISO 23999	%	≤ 0.40	≤ 0.40
Residual Indentation / Resteindruck	EN ISO 24343-1	mm	≤ 0.10	≤ 0.20
Residual Indentation (average measured value) / Resteindruck	-	mm	~ 0.03	~ 0.10
Castor chair test / Stuhlrollenbeanspruchung (type H)	ISO 4918	-	OK	OK
Thermal Conductivity / Wärmeleitfähigkeit	EN ISO 10456	W/(m.k)	0.25	0.25
Colour Fastness / Lichtechtheit	EN 20 105 - B02	degree	≥ 6	≥ 6
Surface Treatment / Oberflächenvergütung	-	-	PROTECSOL®	PROTECSOL®
Chemical Products Resistance / Verhalten gegenüber Chemikalien <sup>(1)</sup>	EN ISO 26987	-	OK	OK
Anti-bacterial activity / Antibakterielle Aktivität (E. coli - S. aureus - MRSA) <sup>(2)</sup>	ISO 22196	-	> 99 % inhibits growth	> 99 % inhibits growth
Anti-viral activity (Human coronavirus) after 2 h / Antivirale Aktivität (Humanes Coronavirus) nach 2 Std <sup>(2)</sup>	ISO 21702	-	> 99,3 % (virucidal activity)	> 99,3 % (virucidal activity)
<b>Environment/Indoor Air Quality / Umwelt/Raumluftqualität</b>				
TVOC after 28 days / TVOC (28 Tage)	ISO 16000-6	micrograms/m <sup>3</sup>	<10	<10
Certification / Zeugnis	-	-	Floorscore®	Floorscore®
<b>CE Marking / CE Kennzeichnung</b>				




EN 14041



(1) Regarding the resistance to chemicals, please download the corresponding leaflet from our website.  
 (2) The implementation of an effective cleaning method is the best defence against infection.

 The information contained in this document is valid from 01/01/2024 and is subject to change at any time without notice.  
 In the context of constantly changing technology, our customers are responsible, prior to any use, for checking with us that this document is the version in force. Rubber leaves indelible stains on vinyl floorings: do not use mats with rubber backing and replace tubular furniture feet with those made of PVC or polyamide. Place mats of sufficient length at entrances to reduce outside sources of dirt.

 **WICHTIG:** Alle Angaben in dieser Karte entsprechen dem Kenntnisstand zum Zeitpunkt der Drucklegung. Im Einzelfall kann für deren Vollständigkeit, Richtigkeit und Anwendbarkeit keine Gewähr übernommen werden. Die aktuellste Version der technischen Daten, weitere Informationen und Downloads finden Sie unter: [www.gerflor.de](http://www.gerflor.de). Bestimmte Gummierarten (z.B. Stuhl- und Möbelfüße, Matten mit Gummirücken) hinterlassen bei längerer Einwirkung Verfärbungen auf elastischen Bodenbelägen, die nicht mehr zu entfernen sind. Dies kann vermieden werden, wenn ausschließlich Füße oder Matten aus nicht verfärbenden Gummiquitäten, PVC oder Polyethylen verwendet werden. Verwenden Sie Eingangsmatten ausreichender Größe, um den Schmutzeintrag zu reduzieren.

## we care / we act Our Commitments for a Sustainable future

  
**CARBON FOOTPRINT\***  
 -20 % kg  
 CO<sub>2</sub> equivalent/m<sup>2</sup>  
 between 2020 and 2025

  
**BIOSOURCED CONTENT\*\***  
 10 % by 2025

  
**RECYCLED CONTENT**  
 30 % by 2025

  
**ADHESIVE FREE\*\*\***  
 35 % by 2025

  
**ANNUAL VOLUME RECYCLED**  
 60 000 t by 2025



\* Scopes 1 and 2 defined in the GHG protocol. \*\* % of activity with biosourced materials \*\*\* % of activity - adhesive free solution